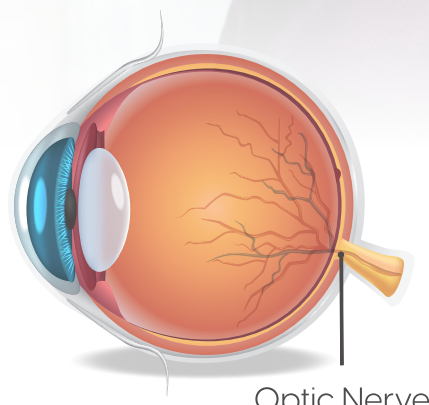


What is Glaucoma?

Glaucoma, a group of several eye diseases that change your eye pressure causing damage to the **Optic Nerve** and leads to permanent loss of some or all vision.

In the most common type of glaucoma, **Open Angle Glaucoma**, **build-up of pressure within the eye** leading to damage of the nerve.

There is no cure for Glaucoma, early detection is essential for preserving your vision.



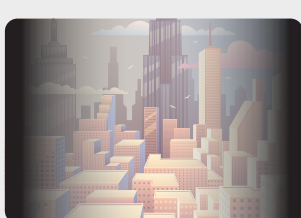
Optic Nerve

How Progression of Glaucoma Impacts Your Vision

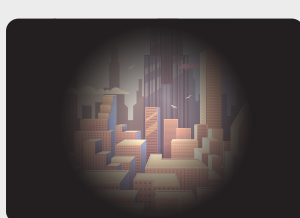
Glaucoma may begin and you'll have no changes in your **Normal Vision**



Once Glaucoma starts to damage your Optic Nerve it damages your **Peripheral Vision**



In the final stages of Glaucoma your vision deteriorates to **Tunnel Vision**



Though other symptoms might remain, Glaucoma will eventually end with **Permanent Blindness**



Other Symptoms May Include

Persistent Eye Redness



Intense Headache



Severe Eye Pain



Nausea & Vomiting



Low Vision Increases Risk of

Balance Problems



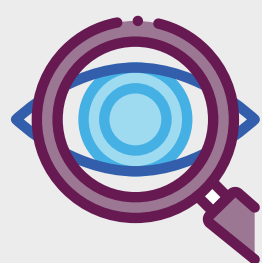
Isolation & Depression



Injury from Falls



There are often no early stage symptoms of Glaucoma. For seniors over the age of 65+ seeing an optometrist every year is vital for early detection of glaucoma.



3M
people in the US have glaucoma

Open Angle Glaucoma



accounts for **90%** of glaucoma cases. Other types include closed-angle glaucoma and normal-tension glaucoma.

Diabetes Doubles
your chance of having glaucoma



Glaucoma costs the U.S. economy **\$2.86 billion** every year in direct costs and productivity losses



Who is at Risk?



60+
seniors are especially at risk for glaucoma



3 of 5
cases of glaucoma are women



Anyone with **Family History** of glaucoma



Black Americans are **300%** more likely to get glaucoma

Glaucoma by Age

Age **40-49**
Incidence Rate
1 of 100

Age **50-59**
Incidence Rate
1 of 50

Age **60-69**
Incidence Rate
1 of 30

Age **70-79**
Incidence Rate
1 of 16

Age **80+**
Incidence Rate
1 of 10

How Much Does Glaucoma Cost?



3 Billion
annually in costs nationwide for glaucoma



\$600
annually to treat early-stage glaucoma



\$2500
annually to treat end-stage glaucoma



1-2 K
for laser surgery to treat glaucoma



Up to 11K
for incision surgeries to treat glaucoma

How Often Should I Get Tested For Glaucoma?

get a comprehensive dilated eye exam on your doctor's recommended schedule

0-2
years old

Once at 6-12 months

3-5
years old

Once within this range

6-17
years old

Before first grade and annually thereafter

18-64
years old

At least every two years

65+
years old

Annually or as recommended



Treatment or surgery may delay the progression of glaucoma but there is no cure. **Early detection is essential** for preserving your vision.



The World Health Organization has determined that glaucoma is the **leading cause of blindness** in the world. In the United States it accounts for **12%** of all cases of adult blindness.

To learn more visit ariacarepartners.com or call **(877) 675-1211**